

(19) World Intellectual Property Organization
International Bureau



(43) International Publication Date
27 September 2001 (27.09.2001)

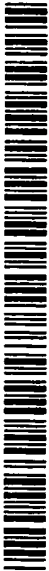
PCT

(10) International Publication Number
WO 01/72042 A1

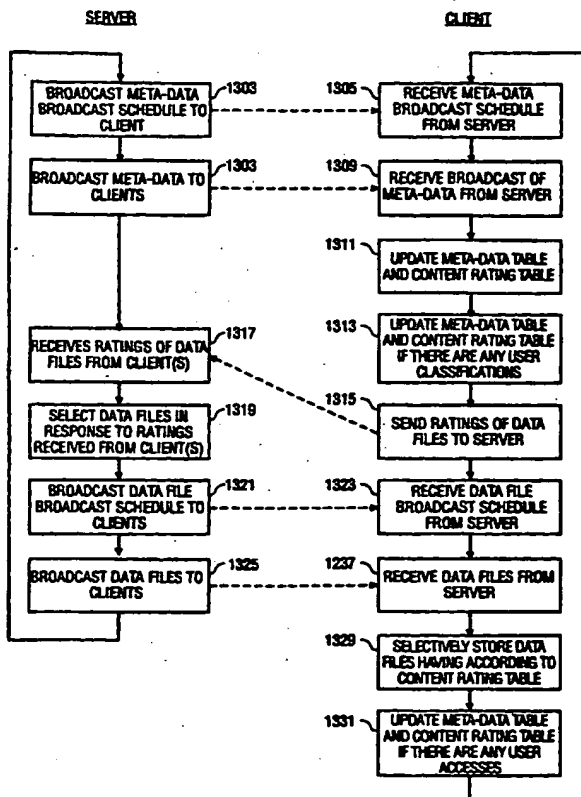
- (51) International Patent Classification⁷: H04N 7/173, 7/16
- (21) International Application Number: PCT/US01/01576
- (22) International Filing Date: 16 January 2001 (16.01.2001)
- (25) Filing Language: English
- (26) Publication Language: English
- (30) Priority Data:
09/532,034 21 March 2000 (21.03.2000) US
- (71) Applicant (for all designated States except US): INTEL CORPORATION [US/US]; 2200 Mission College Boulevard, Santa Clara, CA 95052 (US).
- (72) Inventor; and
- (75) Inventor/Applicant (for US only): CONNELLY, Jay, H. [US/US]; 3148 NW 126th Place, Portland, OR 97229 (US).
- (74) Agents: MALLIE, Michael, J. et al.; Blakely, Sokoloff, Taylor & Zafman LLP, 7th floor, 12400 Wilshire Boulevard, Los Angeles, CA 90025 (US).
- (81) Designated States (national): AE, AG, AL, AM, AT, AU, AZ, BA, BB, BG, BR, BY, BZ, CA, CH, CN, CR, CU, CZ, DE, DK, DM, DZ, EE, ES, FI, GB, GD, GE, GH, GM, HR, HU, ID, IL, IN, IS, JP, KE, KG, KP, KR, KZ, LC, LK, LR, LS, LT, LU, LV, MA, MD, MG, MK, MN, MW, MX, MZ, NO, NZ, PL, PT, RO, RU, SD, SE, SG, SI, SK, SL, TJ, TM, TR, TT, TZ, UA, UG, US, UZ, VN, YU, ZA, ZW.
- (84) Designated States (regional): ARIPO patent (GH, GM, KE, LS, MW, MZ, SD, SL, SZ, TZ, UG, ZW), Eurasian patent (AM, AZ, BY, KG, KZ, MD, RU, TJ, TM), European patent (AT, BE, CH, CY, DE, DK, ES, FI, FR, GB, GR, IE, IT, LU, MC, NL, PT, SE, TR), OAPI patent (BF, BJ, CF, CG, CI, CM, GA, GN, GW, ML, MR, NE, SN, TD, TG).

[Continued on next page]

(54) Title: METHOD AND APPARATUS TO DETERMINE BROADCAST CONTENT AND SCHEDULING IN A BROADCAST SYSTEM



WO 01/72042 A1



(57) Abstract: A broadcast system, method and apparatus providing content on demand. In one embodiment, the disclosed broadcast system includes a server that broadcasts meta-data to a plurality of clients. The meta-data describes a plurality of data files that are to be broadcast or potentially broadcast later by the server. Each client receives the broadcasted meta-data from the server and updates and maintains a local meta-data table and a content rating table. Based on the meta-data, previous access habits of the user and optional user classifications, the client system selectively receives and/or stores the data files that are later broadcast by the server. In one embodiment, the client systems transmit back to the server ratings of each one of the data files described by the meta-data based on the user's previously accessed data files and optional user classifications. The server then determines the data files to be broadcast and the broadcast schedule based on the ratings received from the clients.

BEST AVAILABLE COPY



Published:

- with international search report
- before the expiration of the time limit for amending the claims and to be republished in the event of receipt of amendments

For two-letter codes and other abbreviations, refer to the "Guidance Notes on Codes and Abbreviations" appearing at the beginning of each regular issue of the PCT Gazette.

METHOD AND APPARATUS TO DETERMINE BROADCAST CONTENT AND SCHEDULING IN A BROADCAST SYSTEM

BACKGROUND OF THE INVENTION

Field of the Invention

The present invention relates generally to broadcast systems and, more specifically, the present invention relates to providing content on demand in broadcast systems.

Background Information

Broadcast systems traditionally transmit data in one direction from a server system to a plurality of client systems. Users of the client systems typically consume the signals received from the server system as they are broadcast. One paradigm in which users are provided with content on demand involves server systems that broadcast the same data continuously and/or at staggered intervals. Thus, if a user desires to consume a particular data file on demand, the user "tunes in" to one of the repeated broadcasts of the data file. One example of this paradigm can be illustrated with present day "pay per view" movies that are available from cable or satellite television providers. For instance, cable television providers commonly broadcast the same movies repeatedly on multiple channels at staggered intervals. Users that wish to watch a particular movie "on demand" simply tune in to one of the channels on which the desired movie is broadcast at the beginning of one of the times that the movie is broadcast. The continuous and repeated broadcasts of the same data or programs results in a very inefficient use of broadcast bandwidth. Bandwidth used to broadcast the same data repeatedly on multiple channels could otherwise be used to broadcast different data.

Another paradigm for providing content on demand in a broadcast system involves a user recording a particular data file and later accessing the data file "on demand." Continuing with the television broadcast illustration discussed above, an example of this paradigm is a user setting up his or her video cassette recorder (VCR) to record a desired television program. Later, when the user wishes to watch the television program "on demand," the user simply plays the earlier recorded program from his or her VCR. Recently, more advanced digital video recorders have become available, which

record the television broadcasts on internal hard drives instead of the video cassette tapes used by traditional VCRs. However, use of the digital video recorders is similar to traditional VCRs in that the users are required to explicitly set the criteria used (e.g. date, time) to determine which broadcasts are recorded on the internal hard drives.

Another limitation with present day broadcast systems is that it is difficult for most users of the client systems to provide feedback to broadcasters with regard to programming. For example, continuing with the television broadcast illustration discussed above, many of today's television broadcasters rely upon Neilson ratings to determine broadcast programming and/or scheduling. Neilson ratings are generally based upon only a small sampling of a cross-section of the public. Consequently, most television viewers have relatively little or no impact on broadcast schedules and/or content.

BRIEF DESCRIPTION OF THE DRAWINGS

The present invention is illustrated by way of example and not limitation in the accompanying figures.

Figure 1A is a block diagram illustrating one embodiment of a broadcast system in accordance with the teachings of the present invention.

Figure 1B is a block diagram illustrating another embodiment of a broadcast system in accordance with the teachings of the present invention.

Figure 1C is a block diagram illustrating yet another embodiment of a broadcast system in accordance with the teachings of the present invention.

Figure 2 is a block diagram of one embodiment of a computer system representative of a client or a server in accordance with the teachings of the present invention.

Figure 3 is a flow diagram illustrating one embodiment of the flow of events in a server and a client when broadcasting meta-data and data files in accordance with the teachings of the present invention.

Figure 4 is a flow diagram illustrating one embodiment of the flow of events in a client when processing meta-data broadcast from a server to maintain a meta-data table and content rating table in accordance with the teachings of the present invention.

Figure 5 is an illustration of one example of meta-data broadcast by a server to

describe a in accordance with the teachings of the present invention.

Figure 6 is an illustration of one example of a meta-data table updated and maintained by a client in accordance with the teachings of the present invention.

Figure 7 is an illustration of one example of a content rating table updated and maintained by a client in accordance with the teachings of the present invention.

Figure 8 is diagram an illustrating one embodiment of data files that are classified by a user in accordance with the teachings of the present invention.

Figure 9 is diagram illustrating one embodiment of a meta-data table that is updated in response to user classifications in accordance with the teachings of the present invention.

Figure 10 is diagram illustrating one embodiment of a meta-data table that is updated after a user access in accordance with the teachings of the present invention.

Figure 11 is diagram illustrating one embodiment of a content rating table that is updated after a user access in accordance with the teachings of the present invention.

Figure 12 is diagram illustrating another embodiment of a meta-data table that is updated after another user access in accordance with the teachings of the present invention.

Figure 13 is a flow diagram illustrating one embodiment of the flow of events in a server and a client when broadcasting meta-data and data files and the server receiving content ratings from the client(s) in accordance with the teachings of the present invention.

DETAILED DESCRIPTION

In one aspect of the present invention, signaling methods and apparatuses for providing content on demand in a broadcast system are disclosed. In another aspect of the present invention, methods and apparatuses are disclosed for rating content to be broadcast or to be broadcast potentially from a server are disclosed. In yet another aspect of the present invention, methods and apparatuses for dynamically determining the broadcast content and/or schedule of a server are disclosed. In the following description numerous specific details are set forth in order to provide a thorough understanding of the present invention. It will be apparent, however, to one having ordinary skill in the art that the specific detail need not be employed to practice the present invention. In other

instances, well-known materials or methods have not been described in detail in order to avoid obscuring the present invention.

Figure 1A is an illustration of one embodiment of a broadcast system in accordance with the teachings of the present invention. As illustrated in the depicted embodiment, a server 103 is configured to broadcast information to a plurality of clients 105, 107 and 109. In the embodiment shown in Figure 1A, client 105 receives a broadcast from server 103 through a link 115 from a broadcast antenna 111. Similarly, client 107 receives a broadcast from server 103 through a link 117 and client 109 receives a broadcast from server 103 through a link 119 from broadcast antenna 111. In one embodiment, links 115, 117 and 119 are uni-directional wireless radio frequency (RF) links from broadcast antenna in a format such as for example, but not limited to known amplitude modulation (AM) or frequency modulation (FM) radio signals, television (TV) signals, digital video broadcast (DVB) signals or the like, which are broadcast through the atmosphere.

In one embodiment, server 103 is configured to broadcast a plurality of data files, which may be received by clients 105, 107 and 109. In one embodiment, the data files may be any combination of a number of different types of files including for example video, audio, graphics, text, multi-media or the like. For purposes of explanation, many of the examples provided in this disclosure to help describe the present invention assume that the data files to be broadcast by the server are audio/video files, such as for example movies with moving images and sound. However, it will be appreciated that the data files broadcast in accordance with the teachings of the present invention are not limited only to audio/video files.

As illustrated in the embodiment shown Figure 1A, there is a one-way or uni-directional link between the server 103 and clients 105, 107 and 109. However, in another embodiment, it is appreciated that there may also be a communications link between server 103 and each client 105, 107 and 109, respectively. In particular, Figure 1B is an illustration of the broadcast system of Figure 1A with the addition of a "back channel" or communications link between each client 105, 107 and 109 and server 103. In particular, the embodiment illustrated in Figure 1B shows links 121, 123 and 125, which may be used by clients 105, 107 and 109, respectively, to send information back to

server 103. In one embodiment, however, links 121, 123 and 125 are not utilized in accordance with the teachings of the present invention. As will be discussed, in another embodiment, links 121, 123 and 125 are utilized in accordance with the teachings of the present invention. Although links 121, 123 and 125 are illustrated in Figure 1B as direct links between clients 105, 107 and 109 and server 103, it is appreciated that clients 105, 107 and 109 may communicate information to server 103 through indirect links such as for example but not limited to broadcasted wireless signals, network communications or the like.

Figure 1C is an illustration of yet another embodiment of a broadcast system in accordance with the teachings of the present invention. As shown, server 103 is coupled to broadcast information to a plurality of clients 105, 107 and 109 through a network 113. In one embodiment, network 113 may be any type of communications network through which a plurality of different devices may communicate such as for example but not limited to the Internet, a wide area network (WAN), a local area network (LAN), an intranet, or the like.

In the embodiment illustrated in Figure 1C, client 105 is coupled to receive information broadcast from server 103 through link 115. Similarly, client 107 is coupled to receive information broadcast from server 103 through link 117 and client 109 coupled to receive information broadcast from server 103 through link 119. It is noted that in the embodiment illustrated in Figure 1C, links 115, 117 and 119 are shown as uni-directional links from network 113 to clients 105, 107 and 109. In another embodiment, links 115, 117 and 119 are bi-directional links, which enable clients 105, 107 and 109 to communicate information to server 103.

Figure 2 is a block diagram illustrating one embodiment of a machine 201 that may be used for the server 103, or clients 105 or 107 in accordance with the teachings of the present invention. In one embodiment, machine 201 is a computer or a set top box that includes a processor 203 coupled to a bus 207. In one embodiment, memory 205, storage 211, display controller 209, communications interface 213, input/output controller 215 and audio controller 227 are also coupled to bus 207.

In one embodiment, machine 201 interfaces to external systems through communications interface 213. Communications interface 213 may include a radio

transceiver compatible with AM, FM, TV, digital TV, DVB, wireless telephone signals or the like. Communications interface 213 may also include an analog modem, Integrated Services Digital Network (ISDN) modem, cable modem, Digital Subscriber Line (DSL) modem, a T-1 line interface, a T-3 line interface, an optical carrier interface (e.g. OC-3), token ring interface, satellite transmission interface, a wireless interface or other interfaces for coupling a device to other devices.

In one embodiment, a carrier wave signal 223 is received by communications interface 213 to communicate with antenna 111. In one embodiment, carrier wave signal 225 is received/transmitted between communications interface 213 and network 113. In one embodiment, a communications signal 225 may be used to interface machine 201 with another computer system, a network hub, router or the like. In one embodiment, carrier wave signals 223 and 225 are considered to be machine readable media, which may be transmitted through wires, cables, optical fibers or through the atmosphere, or the like.

In one embodiment, processor 203 may be a conventional microprocessor, such as for example but not limited to an Intel x86 or Pentium family microprocessor, a Motorola family microprocessor, or the like. Memory 205 may be a machine readable medium such as dynamic random access memory (DRAM) and may include static random access memory (SRAM). Display controller 209 controls in a conventional manner a display 219, which in one embodiment may be a cathode ray tube (CRT), a liquid crystal display (LCD), an active matrix display, a television monitor or the like. The input/output device 217 coupled to input/output controller 215 may be a keyboard, disk drive, printer, scanner and other input and output devices, including a television remote, mouse, trackball, trackpad, joystick, or the like. In one embodiment, audio controller 227 controls in a conventional manner audio output 231, which may include for example audio speakers, headphones, an audio receiver, amplifier or the like. In one embodiment, controller also controls in a conventional manner audio input 229, which may include for example a microphone or input(s) from an audio or musical device, or the like.

Storage 211 in one embodiment may include machine readable media such as for example but not limited to a magnetic hard disk, a floppy disk, an optical disk, a smart

card or another form of storage for data. In one embodiment, storage 211 may include removable media, read-only media, readable/writable media or the like. Some of the data may be written by a direct memory access process into memory 205 during execution of software in computer system 201. It is appreciated that software may reside in storage 211, memory 205 or may be transmitted or received via modem or communications interface 213. For the purposes of the specification, the term "machine readable medium" shall be taken to include any medium that is capable of storing data, information or encoding a sequence of instructions for execution by processor 203 to cause processor 203 to perform the methodologies of the present invention. The term "machine readable medium" shall be taken to include, but is not limited to solid-state memories, optical and magnetic disks, carrier wave signals, and the like.

In one embodiment, a broadcast system, such as for example one similar to any of those illustrated in Figures 1A-1C, is configured to have a server 103 broadcast a plurality of data files to a plurality of clients 105, 107 and 109. As will be discussed in greater detail below, each of the plurality of data files is described with meta-data in accordance with teachings of one embodiment of the present invention. In general, meta-data can be considered as a set of descriptors or attribute values that describe content or data files to be broadcast or potentially broadcast from server 103. The meta-data of the present invention provides information that enables client systems 105, 107 and 109 to reason and make informed decisions regarding the content of data files to be broadcast later by server 103. As will be discussed, various embodiments of the present invention utilize the meta-data for client-side filtering, storage management and other personalization techniques as well as determine broadcast schedules and content of future server broadcasts.

Figure 3 is a flow diagram illustrating the processing that is performed in accordance with teachings of one embodiment of the present invention. Figure 3 illustrates one embodiment of a signaling protocol in which signals are transmitted such that client systems can locate and acquire broadcast content. This includes a pre-broadcast of meta-data by server 103 to client systems 105, 107 and 109. In particular, process block 303 of Figure 3 shows that the server broadcasts the meta-data broadcast schedules to the clients. In one embodiment, the meta-data broadcast schedule indicates

some point in the future when the actual meta-data of the present invention is going to be broadcast by the server. In one embodiment, the client systems use known ports such as for example those used in the program and system information protocol (PSIP), DVB, service advertising protocol (SAP) or the like to listen for upcoming service announcements from the server.

In one embodiment, each client 105, 107 and 109 contains a known scheduling service, which accepts requests to wake up, or be activated, at a specific time to receive the information broadcast by the server. This scheduling service enables the client to wake up at a specified time and select a specified service. For example, in one embodiment, this selection process can be accomplished by tuning to a specific frequency, such as for example in an Advanced Television Systems Committee (ATSC) or a DVB transponder or the like. In one embodiment, the selection process or can be based on a set of data, such as for example multi-cast Internet protocol (IP) addresses, which define a service.

In one embodiment, a client application registers with the client signaling system to receive signals from a specific content provider. The client signaling system maintains a table of applications associated with specific content providers. In one embodiment, information from the server is broadcast over known addresses such that each client can use the known address.

Process block 305 shows that the client receives the meta-data broadcast schedule from the server. In one embodiment, client systems 105, 107 and 109 capture and process this pre-broadcast information in order to determine when to wake-up and receive content, where to receive the content and which content to receive. In one embodiment, when the meta-data broadcast schedule is received by the client, the registered application in the client is notified to receive the meta-data broadcast schedule.

In one embodiment, the clients wake-up at the pre-specified time indicated in the meta-data broadcast schedule to receive the meta-data from the server. Process block 307 shows that the meta-data is then actually broadcast from the server to the clients at the time specified in the meta-data broadcast schedule. Process block 309 shows that the client receives the broadcast of meta-data from the server. As will be discussed, the meta-data includes descriptions of a plurality of data files that will be broadcast or

potentially broadcast later by the server system.

Process block 311 shows that the client system then updates a meta-data table and a content rating table. In one embodiment, a meta-data table and a content rating table are updated and maintained internally or locally by each client system in accordance with the teachings of the present invention.

In one embodiment, a user of the client system may optionally classify any one or more of the plurality of data files that are described by the received meta-data. As will be discussed, the meta-data table and content rating table are updated by the client if there are user classification. This is shown in Figure 3 with process block 313.

In one embodiment, the clients wake-up to receive a data file broadcast schedule from the server. In one embodiment, the data file broadcast schedule indicates a future time in which specific data files, which were described in the previously broadcast meta-data, will be broadcast by the server. Process block 315 shows that the data files are then actually broadcast from the server to the clients at the time specified in the data file broadcast schedule. Process block 317 shows that the client receives the broadcast of data file broadcast schedule from the server.

In one embodiment, the clients wake-up at the pre-specified time indicated in the data file broadcast schedule to receive the data files from the server. Process block 319 shows that the data files are then actually broadcast from the server to the clients at the time specified in the data file broadcast schedule.

In one embodiment, process block 321 shows that the client receives the broadcast of the data files from the server. In one embodiment, process block 323 shows that client-side filtering according to the present invention is provided the client selectively storing data files according to the content rating table. In another embodiment, client-side filtering is provided by the client selectively waking up to selectively receive data files broadcast from the server according to the content rating table. In this embodiment, the client then stores the data files that were selectively received by the client according to the content rating table.

In one embodiment, process block 325 shows that the client then updates the meta-data table and content rating table if there are any user accesses of the stored data files. For purposes of this disclosure, a user access may include a user interacting with,

viewing, watching, listening to, reading, consuming, etc., a data file. For instance, one example of a user accessing a data file may be the user watching a particular movie or listening to a particular song provided by one of the stored data files in client. In one embodiment, a user access will result in the meta-data table and content rating table on the client being updated locally.

Figure 4 is a more detailed flow diagram illustrating one embodiment of the flow of events in a client when processing meta-data broadcasted from a server and updating and maintaining a meta-data table and a content rating table in accordance with the teachings of the present invention. In particular, process block 403 shows that a meta-data table is updated with attributes and attribute values included in the meta-data broadcasted from the server. Process block 405 shows that the content rating table is then updated with an entry for each one of the data files described by the meta-data broadcast from the server.

In one embodiment, it is assumed that a meta-data table, a content rating table and a plurality of data files already exist in the client system. In one embodiment, the meta-data table, content rating table and plurality of data files may be stored and maintained in the client system in memory 205, storage 211 or by accessing a local network or the like with machine 201, as illustrated in the embodiment shown in Figure 2.

To help illustrate the meta-data aspect of the present invention, Figure 5 is an example of one embodiment of meta-data 501, which may be broadcast by the server 103 to the clients 105, 107 and 109. For explanation purposes, it is assumed that the data files broadcast by server 103 in this example are audio/video files such as for example movies or TV programming. As mentioned above, data files may be other types of files such as for example but not limited to audio, graphics, text, multi-media or the like.

In the illustrated embodiment, meta-data 501 in Figure 5 shows that four movies, or data files, will be broadcast later by server 103. These movies shown in this example are "Action Dude," "The Funny Show," "Blast 'Em" and "Hardy Har Har." Meta-data 501 includes attributes and attribute values that describe each one of the movies to be broadcast later by server 103. In the example illustrated, two attributes are provided to describe each movie in meta-data 501. The attributes shown in Figure 5 are "Actor" and

"Genre." It is appreciated that other embodiment of the present invention may include different attributes as well as or attributes values. For instance, a non-exhaustive list of other attributes that may be used to describe movies may include "Director," "Year," "Effects," "Ending," etc. In one embodiment, for example, 40-50 different attributes are provided to describe movies in accordance with the teachings of the present invention.

Referring back to the particular example shown in Figure 5, "Action Dude" is an "action" movie featuring actor "Joe Smith." "The Funny Show" is "comedy" movie featuring actress "Jane Doe." "Blast 'Em" is an "action" movie featuring actor "Jane Doe." "Hardy Har Har" is a "comedy" movie featuring "Joe Smith."

To help illustrate the meta-data table aspect of the present invention, Figure 6 is an example of one embodiment of meta-data table 601, which is updated and maintained locally by each client 105, 107 and 109. In the illustrated embodiment, meta-data table 601 in Figure 6 has been populated with the data included in meta-data 501, which was broadcasted earlier from server 103. In one embodiment, meta-data table 601 includes a list of attributes, attribute values and corresponding relevance values and believability factors. In particular, meta-data table 601 includes attribute values "Joe Smith," "Jane Doe," "action," and "comedy." At this time, the relevance values and believability factors for attribute values "Joe Smith," "Jane Doe," "action," and "comedy" are all zero in Figure 6. As will be shown, in one embodiment, the relevance values and believability factors of the present invention will be updated and maintained as the user interacts with the client system.

In one embodiment, the relevance values in meta-data table 601 are indicators as to how relevant the associated attribute and attribute values are for predicting a particular user's behavior. For instance, the relevance value indicates how likely it is for the user to watch a particular movie because of this particular attribute value. In one embodiment, relevance values in meta-data table 601 are within a range of values such as for example from -10 to 10. As will be discussed, the relevance value may be increased if for example the user watches a particular movie or at least expresses an interest in a particular movie having that particular attribute value. Conversely, the relevance value may be decreased if the user for example does not watch a particular movie or if the user explicitly indicates that he or she does not want to watch a particular movie having that

particular attribute value.

In one embodiment, the believability factors in meta-data table 601 are weighting factors to be applied to specific attribute and attribute value pairs when rating or predicting whether a user will actually access a particular data file having that particular attribute value. In one embodiment, believability factors in meta-data table 601 are within a range of values such as for example from -10 to 10. In one embodiment, the believability factors may be increased for example when an attribute value accurately predicts a data file in which the user is interested. Conversely, the believability factors may be decreased when a user is interested in the data file, even though the particular attribute value indicates otherwise.

In one embodiment, meta-data table 601 entries are constructed from the aggregation of all meta-data 501 associated with potential content or data files to be broadcast from server 103. In one embodiment, entries in meta-data table 601 are updated based on explicit user requests. In addition, updates to meta-data table 601 may also be implicitly based on whether a user accesses specific data files having particular attribute values, independent of whether the user explicitly classifies a particular movie.

To help illustrate the content rating table aspect of the present invention, Figure 7 is an example of one embodiment of a content rating table 701, which in one embodiment is updated and maintained locally by each client 105, 107 and 109. In the illustrated embodiment, content rating table 701 in Figure 7 includes a list of the data files described in meta-data 501 as well as any additional data files that are currently stored or cached locally by the client.

In one embodiment, data files may be stored locally by the client in for example memory 205, storage 211 or in a locally accessible network by machine 201 of Figure 2. For purposes of this disclosure, data files being stored locally by the client may also be interpreted to include a data file stored "locally" by the client in a known network storage configuration, separate from the server. For purposes of this disclosure, the data file being stored or cached locally by the client is to be interpreted as the data file being stored for later access, retrieval or consumption. In one embodiment, the local cache of the present invention is considered to be a first level cache. Thus, the local cache the present invention is sized accordingly to increase the possibility of a single hit.

Referring back to the continuing example of data files representing audio/video files, a movie is stored locally by the client. After a user watches the movie, the storage space occupied by the movie is generally considered to be available for storage of another movie to be broadcast sometime later. Thus, it is appreciated that the local cache of the client system is modeled as the single use system, e.g. fire and forget, in accordance with teachings of the present invention. In one embodiment, it is assumed that when a user accesses a data file, it is not likely that the user will want to access that same data file again. If a user has not watched a particular movie, the storage space occupied by that movie is generally considered not to be available for storage of another movie. However, if there is no additional storage space available and a higher rated movie is to be broadcast, the lower rated unwatched movie is replaced by the higher rated movie in accordance with the teachings of the present invention.

Referring back to the embodiment of content rating table 701 shown Figure 7, each movie also has an associated rating, a rating type indicator, an in cache indicator and a next treatment indicator. In one embodiment, the rating indicates a rating value for the associated data file. The rating value in one embodiment may either be explicitly input by a user or implicitly generated by the client system by processing meta-data associated with that particular data file. In one embodiment, a relatively high rating value predicts that the particular data file may be of interest to the user. Conversely, in one embodiment, a relatively low rating value predicts that the particular data file is unlikely to be of interest to the user.

In one embodiment, the rating type indicator indicates whether the rating value of this particular data file was a result of explicit input from the user or if the rating value was implicitly generated by the client system. Thus, in one embodiment, the rating type indicator of content rating table 701 may be explicit, implicit or N/A if the data file or movie has not yet been rated. In one embodiment, if a data file has been explicitly classified by a user, the rating values of attribute values of the data file are no longer updated implicitly by the client system. However, if a data file has not yet been classified or has only been implicitly rated by the client system, the rating of the attribute values of the data file may be further updated or adjusted by the client system.

In one embodiment, the in cache indicator indicates whether that particular data

file is currently stored or cached locally by the client. In the embodiment illustrated in Figure 7, the movies "Action Dude," "The Funny Show" and "Blast 'Em" already exist in the local storage of the client system. Conversely, the movie "Hardy Har Har" has not been stored in the local storage of the client system in the example illustrated in Figure 7.

In one embodiment, the next treatment indicator is used to track future actions to be taken for the particular data file. For example, if a movie has already been watched by the user, the next treatment indicator would indicate "replace" to indicate that the storage space occupied by that particular movie is available for storage of another movie. In one embodiment, if the movie has not yet been watched by the user, the next treatment indicator would indicate "keep." In one embodiment, if the movie has not been stored locally by the client and if the rating value predicts that this particular movie may be of interest to the user, the next treatment indicator would indicate "capture." In one of embodiment, if the movie has not yet been broadcast by the server and the rating predicts that this movie is unlikely to be of interest to the user, the next treatment indicator would indicate "ignore."

As was discussed back to Figure 4, process blocks 403 and 405 show that the meta-data table and the content rating table are updated according to meta-data broadcast from the server. Decision block 407 shows that it is then determined whether there is a user classification of any of the data files. Referring briefly to Figure 8, an example is shown where a user classifies some of the movies, as described by meta-data 501. In particular, the user has expressed interest in the movie "Action Dude" by indicating that he or she wishes to receive that movie. In this example, the user has expressed that he or she does not have any interest in the movie "The Funny Show" by indicating that he or she refuses that movie. In this example, the user has not provided any information or classification regarding any of the remaining movies.

Referring back to Figure 4, if the user has classified any of the data files, process block 409 shows that the relevance values of the particular attributes of the classified data files are updated in meta-data table 601. Process block 411 shows that the ratings of data files having attribute values with relevance values that were adjusted in response to the user classification(s) are also adjusted. In one embodiment, if the user has not classified any data files, process blocks 409 and 411 are skipped.

To illustrate an example of when a user classifies data files, Figure 9 shows a meta-data table 601 that is updated or adjusted in response to a user classification. In the example provided in Figure 8, the user indicated that he or she was interested in the movie "Action Dude." Meta-data 501 in Figure 5 shows that "Action Dude" features actor "Joe Smith" and is an "action" movie. Thus, referring to meta-data table 601 in Figure 9, the relevance values for attribute values "Joe Smith" and "action" are adjusted to reflect that the user explicitly expressed an interest in "Action Dude." In one embodiment, the relevance values are increased to reflect that the user was interested. As will be discussed, in one embodiment, the believability factors associated with each attribute value are not updated until there is a user access of the data file having that particular attribute value.

Continuing with the example of Figure 8, the user indicated that he or she was not interested in the movie "The Funny Show." Meta-data 501 in Figure 5 shows that "The Funny Show" features actress "Jane Doe" and is a "comedy" movie. Thus, referring back to meta-data table 601 in Figure 9, the relevance values for attribute values "Jane Doe" and "comedy" are adjusted to reflect that the user explicitly expressed that he or she was not interested in "The Funny Show." In one embodiment, the relevance values are decremented to reflect that the user was not interested.

Continuing with the example of Figure 8, the user did not provide any information regarding the movies "Blast 'Em" and "Hardy Har Har." Accordingly, the relevance values of the attribute values associated with "Blast 'Em" and "Hardy Har Har" are not updated in meta-data table 601.

As will be discussed, in one embodiment, updates to the ratings in content rating table 701, as described in process block 411, are related to the relevance values and believability factors of the attribute values listed in meta-data table 601. A detailed description of the processing that occurs in process block 411 will be discussed below with a discussion of process block 417.

Referring back to Figure 4, if the user accesses any of the data files, e.g. the user watches a movie, as determined in decision block 413, process block 415 shows that the relevance values and the believability factors of the particular attributes of the user accessed data files are updated in meta-data table 601. Process block 417 shows that the

ratings of data files having attribute values with relevance values that were adjusted in response to the user access(es) are also adjusted. If the user has not accessed any data files, process blocks 415 and 417 are skipped.

To illustrate an example of a user accessing data files, assume that the user watches the movie "Action Dude." Meta-data 501 in Figure 5 shows that "Action Dude" features actor "Joe Smith" and is an "action" movie. In one embodiment, each time a user accesses or interacts with particular data file, the believability factor of the attribute values of that film are adjusted or updated. In one embodiment, for attribute values having relevance values greater than zero, the believability factor for that attribute value is increased, since that attribute value accurately served as a predictor for a data file that the user would access. In one embodiment, for attribute values having relevance values less than zero, the believability factor for that attribute value is decreased, since that attribute value did not accurately serve as a predictor for a data file that the user would access. Therefore, Figure 10 shows a meta-data table 601 that is updated or adjusted in response to the user access of "Action Dude." In this example, the believability factors of "Joe Smith" and "action" are increased since the relevance values for these attribute values were greater than zero.

In one embodiment, the relevance values associated with implicitly rated data files are also increased in meta-data table 601 in response to a user access. However, in the example shown in meta-data table 601 of Figure 10, "Action Dude" was explicitly classified by the user. In one embodiment, the relevance values are not updated in meta-data table 601 in response to a user access of data files explicitly classified by the user.

Figure 11 shows content rating table 701, which is updated in response to the user access of "Action Dude," as described in process block 417. As mentioned earlier, content rating table 701 is also updated as described in process block 411 in accordance with the teachings of the present invention. As shown in content rating table 701 of Figure 11, "Action Dude" has a rating value of 1. The rating type of "Action Dude" is "explicit" because the user explicitly classified "Action Dude," as described above in connection with Figure 8. The in cache indicator indicates that "Action Dude" is presently locally stored by the client system. The next treatment indicator indicates replace because the user has already watched "Action Dude."

In one embodiment, the rating values in content rating table 701 are determined as follows. Meta-data 501 shows that "Action Dude" has the attribute values "Joe Smith" and "action." Meta-data table 601 of Figure 10 shows that "Joe Smith" has a relevance value of 1 and a believability factor of 1. Meta-data table 601 of Figure 10 also shows that "action" has a relevance value of 1 and a believability factor of 1. In one embodiment, the rating value of a particular data file is determined considering the all of the relevance values combined with their respective believability factors for all the attribute values of the data file. For instance, in one embodiment, the rating value for a data file is equal to the average of all of products of each relevance value and corresponding believability factor for the attribute values of the data file.

To illustrate, referring to "Action Dude" in content rating table 701 of Figure 11, the product of the relevance value and believability factor of "Joe Smith" is $1 * 1$, which equals 1. The product of the relevance value and believability factor of "action" is $1 * 1$, which equals 1. The average of the products, 1 and 1, is 1. Therefore, the rating of "Action Dude" in content rating table 701 of Figure 11 is 1.

Similarly, with regard to "Blast 'Em" in content rating table 701, "Blast 'Em" has the attribute values "Jane Doe" and "action." The relevance value and believability factors for "Jane Doe" in meta-data table 601 of Figure 10 are -1 and 0, respectively. Thus, the rating of "Blast 'Em" in content rating table 701 is the average of $1 * 0$ and $1 * 1$, which equals 0.5. The ratings for "The Funny Show" and "Hardy Har Har" in content rating table 701 in the example shown in Figure 11 are determined in a similar fashion in one embodiment of the present invention.

It is noted that since the user classified the movies "Action Dude" and "The Funny Show" above in Figure 8, these movies have an explicit rating type as shown in content rating table 701 of Figure 11. Since the user did not classify the movies "Blast 'Em" and "Hardy Har Har," these movies have an implicit rating in content rating table 701.

It is appreciated that the discussion above provides one example of how the rating values in content rating table 701 are determined in accordance with the teachings of the present invention. It is noted that ratings values may be determined in other ways in accordance with the teachings of the invention, which consider the relevance values and

believability factors for each of the attribute values of a data file.

In one embodiment, the entry for next treatment in content rating table 701 is determined in part by the rating and in cache values for the particular data file. For example, assume in one embodiment that a rating of greater than zero indicates that the user is predicted to have at least some interest in that particular movie. Therefore, the movies "Blast 'Em" and "Hardy Har Har" may be of some interest to the user. Thus, the next treatment indicates that the movie "Blast 'Em" will be kept in storage and the movie "Hardy Har Har" will be captured when it is later broadcast by the server. As mentioned above, the movie "Action Dude" is marked for replacement in the next treatment field because it has already been watched by the user.

In one embodiment, future interactions by a user with the client system results in similar processing as described above. For instance, assume that the user now watches the movie "Blast 'Em." In this particular example, the user did not classify the movie "Blast 'Em" before watching the movie. In one embodiment, both of the relevance values and believability factors are updated for the attribute values of unclassified data files that are accessed, as shown in meta-data table 601 of Figure 12. Recall from Figure 5 that the movie "Blast 'Em" features "Jane Doe" and is an "action" movie. As shown in Figure 10, the relevance value of "Jane Doe" was less than zero, or -1, prior to the user watching "Blast 'Em." Nevertheless, in this example, the user watched "Blast 'Em," despite the fact that it featured actress "Jane Doe." Accordingly, the believability factor of the "Jane Doe" attribute the value is adjusted downward since this particular attribute value now appears less likely or relevant when predicting a user's viewing habits. In one embodiment, since the relevance value is already less than zero, the believability factor is not adjusted further downward. However, the relevance value and believability factor for the attribute value "action" are adjusted upwards since "action" had a relevance value of greater than zero prior to the user watching "Blast 'Em." Thus, in this example, the relevance value is adjusted upwards from 1 to 2 and the believability factor is also adjusted upwards from 1 to 2. Therefore, the content rating table 601 of Figure 12 now predicts that "action" movies are movies that the user is more likely to watch.

In one embodiment, each time the user interacts with the client system, the meta-data table 601 and the content rating table 701 are updated. Updates to be meta-data

table 601 and content rating table 71 are performed when the user accesses data files as well as when the user explicitly classifies data files. It is appreciated that the user is not required to classify data files explicitly in order for the meta-data table 601 and content rating table 701 to be updated in accordance with the teachings of the present invention. As a result, the content rating table over time will more accurately predict data files in which the user is interested.

In one embodiment, the data files in which the user is predicted implicitly to be most interested as well as the data files in which the user explicitly classified an interest will be the data files that are cache locally on the client system. In effect, the movies that the user is most likely to want to watch are automatically stored locally, and therefore available "on demand," in accordance with teachings of the present invention without the user having to explicitly request these movies in advance or explicitly specify criteria used to identify the movies.

As can be appreciated, by storing the data files locally on each client, broadcast bandwidth is utilized more efficiently in accordance with teachings of the present invention. Indeed, when a user watches a movie from the local storage of the client, no additional broadcast bandwidth is utilized. In addition, it is also appreciated that a substantial amount of the processing performed in a system according to the teachings of the present invention is performed on each of the client systems when updating their respective meta-data tables and content rating tables. This distributed processing of the present invention enables the presently disclosed broadcast system to scale across a very large number of users since the incremental cost to the server for each additional client is zero.

In another embodiment, ratings values such as for example those generated in the content rating tables maintained and updated by client systems of the present invention may be used to determine broadcast content and schedules of a server in accordance with teachings of the present invention. For instance, assume a broadcast system such as for example the one described above in Figure 1B. As shown in the depicted embodiment, server 103 broadcasts information to a plurality of clients 105, 107 and 109. In the depicted embodiment, each client 105, 107 and 109 also includes a communications link 121, 123 and 125, respectively, back to server 103. In one embodiment, the

communications links 121, 123 and 125 are used by server 103 to receive ratings from each client 105, 107 and 109, respectively. In one embodiment, the ratings received from each client are generated in a manner similar to that discussed above. In one embodiment, server 103 includes processing that aggregates the ratings received from each client and is therefore able to identify the most highly rated data files. In one embodiment, server 103 then broadcasts the most highly rated data files. In one embodiment, the order or time in which server 103 broadcasts the data files is determined at least in part by the aggregated ratings received from each of the clients.

For instance, Figure 13 is a flow diagram illustrating one embodiment of the flow of events in a server and a client of a broadcast system in which broadcast content and schedules are determined in response to client ratings in accordance with the teachings of the present invention. As shown, process block 1303 of Figure 13 shows that the server broadcasts meta-data broadcast schedules to the clients. In one embodiment, the meta-data broadcast schedule indicates some point in the future when meta-data is going to be broadcast by the server.

Process block 1305 shows that the client receives the meta-data broadcast schedule from the server. In one embodiment, client systems 105, 107 and 109 capture and process this pre-broadcast meta-data information in order to determine when to receive content, where to receive content and which content to receive. In one embodiment, the clients wake-up at the pre-specified time indicated in the meta-data broadcast schedule to receive the meta-data from the server. In one embodiment, the meta-data describe a plurality of data files that will potentially be broadcast later by the server. Process block 1307 shows that the meta-data is then actually broadcast from the server to the clients at the time specified in the meta-data broadcast schedule. Process block 1309 shows that the client receives the broadcast of meta-data from the server.

Process block 1311 shows that in one embodiment the client system then updates a meta-data table and a content rating table. Process block 1313 shows that in one embodiment, a user of the client system can optionally classify any one or more of the plurality of data files that are described by the meta-data. In one embodiment, the meta-data table and content rating table are updated by the client if there are user classifications. In one embodiment, the updates to the meta-data table and content rating

table described in process blocks 1311 and 1313 are performed in a similar manner as described above with respect to for example Figures 1-12.

Process block 1315 shows that the client then sends the ratings of the data files to the server. In one embodiment, each client in the broadcast network sends the ratings for all of the plurality of data files that are described by the meta-data broadcast earlier from the server. In one embodiment, each client sends all or part of the content rating table maintained on the client system.

Process block 1317 shows that the server receives the ratings of the data files from the client(s) in the broadcast system. Process block 1319 shows that the server then selects the data files having the highest ratings as determined by the client systems. In one embodiment, the server includes processing to aggregate all of the ratings received from the clients. In one embodiment, the data files are sorted according to the aggregated ranking.

Process block 1319 shows that in one embodiment the server then selects of the data files in response to the rankings received from all the clients. In one embodiment, the data files that are to be broadcast are then determined in response to the ranking. As a result, one embodiment of a server in accordance with the teachings of the present invention broadcasts only the most appropriate or relevant data files for the customer base or clients. For instance, in one embodiment, only the data files having the highest ranking are broadcast and the data files having the lowest ranking are not broadcast. In one embodiment, the broadcast schedule is also determined in response to be ranking. For instance, in one embodiment, the highest ranked data files are broadcast before lower ranked data files. In another embodiment, the highest ranked data files are broadcast at a time assumed most appropriate to send highly ranked data files. For instance, assume an example where Thursday evenings during primetime is the most important time for a broadcaster to have the highest ratings for broadcast. In this example, a server in accordance with teachings of the present invention would broadcast the highest-ranking data file on Thursday evening during primetime. It is appreciated of course the this example was given for explanation purposes only and that a server may determine a broadcast schedule in other ways in response to ratings received from the clients.

In one embodiment, the data files to broadcast and/or the broadcast schedule are

determined dynamically by the server in response to the ratings received from the client(s) in accordance with teachings of the present invention. Therefore, in one embodiment, broadcast schedules can change over time depending on which data files are available from the server and which content or data files are accessed and/or classified by the clients.

Once the data files to be broadcast and the broadcast schedule are determined by the server, process block 1321 shows that the server then broadcasts the data file broadcast schedule to the clients. Process block 1323 shows that the client then receives the data file broadcast schedule from the server.

In one embodiment, the clients wake-up at the pre-specified time indicated in the data file broadcast schedule to receive the data files from the server. Process block 1325 shows that the data files are then actually broadcast from the server to the clients at the time specified in the data file broadcast schedule.

In one embodiment, process block 1327 shows that the client receives the broadcast of the data files from the server. In one embodiment, process block 1329 shows that the client selectively stores data files according to the content rating table. In another embodiment, the client selectively wakes up to selectively receive data files broadcast from the server according to the content rating table. In this embodiment, the client then stores the data files that were selectively received by the client according to the content rating table. In one embodiment, process block 1331 shows that the client then updates the meta-data table and content rating table if there any user accesses of the stored data files.

It is appreciated that the client system in the embodiment described in Figure 13 is similar to the client systems described in previous embodiments with the exception of the client system sending ratings back to the server. It is appreciated that alternate embodiments of the client system may be utilized in accordance with the teachings of the present invention. In one embodiment, the client system does not include the client-side filtering of the data files that are broadcast from the server. However, the client system does receive the meta-data broadcasts from the server, rate the data files and send the ratings back to the server in accordance with teachings of present invention.

In the foregoing detailed description, the method and apparatus of the present

invention have been described with reference to specific exemplary embodiments thereof. It will, however, be evident that various modifications and changes may be made thereto without departing from the broader spirit and scope of the present invention. The present specification and figures are accordingly to be regarded as illustrative rather than restrictive.

CLAIMS

What is claimed is:

1. A method, comprising:
broadcasting meta-data to one or more client systems, the meta-data including descriptions of a plurality of data files;
receiving ratings of each one of the plurality of data files from the one or more client systems; and
broadcasting a portion of the plurality of data files to the one or more client systems in response to the ratings received from the one or more client systems.
2. The method of claim 1 further comprising selecting the portion of the plurality of data files, which have having higher ratings based on the received ratings.
3. The method of claim 1 further comprising combining the ratings received from the client systems, if ratings are received from more than one client system, to generate an overall ratings list of the plurality of data files.
4. The method of claim 1 further comprising broadcasting a broadcast schedule of the portion of the plurality of data files prior to broadcasting the portion of the plurality of data files.
5. The method of claim 1 further comprising broadcasting a broadcast schedule of the meta-data prior to broadcasting the meta-data to the one or more client systems.
6. An method, comprising:
receiving meta-data broadcast by a server system, the meta-data including descriptions of a first plurality of data files;
rating in response to a content rating table at least one of the first plurality of data files described by the meta-data, the content rating table generated responsive to data files previously accessed;

transmitting the ratings of the at least one of the first plurality of data files to the server system;

receiving a second plurality of data files broadcast by the server system; and

storing based on the content rating table a portion of the second plurality of data files broadcast by the server system.

7. The method of claim 6 further comprising receiving a meta-data broadcast schedule broadcast by the server system, the client system activated in response to the meta-data broadcast schedule.

8. An method, comprising:

receiving meta-data broadcast by a server system, the meta-data including descriptions of a first plurality of data files;

rating in response to a content rating table at least one of the first plurality of data files described by the meta-data, the content rating table generated responsive to data files previously accessed;

transmitting the ratings of the at least one of the first plurality of data files to the server system;

receiving a broadcast schedule of a second plurality of data files broadcast by the server system;

selectively receiving based on the content rating table a portion of the second plurality of data files broadcast by the server system; and

storing the portion of the second plurality of data files broadcast by the server system.

9. The method of claim 8 further comprising receiving a meta-data broadcast schedule broadcast by the server system, a client system activated in response to the meta-data broadcast schedule.

10. The method of claim 8 further comprising receiving a broadcast schedule of the second plurality of data files prior to selectively receiving the portion of the second plurality of data files.

11. An apparatus, comprising:

a processor having circuitry to execute instructions;

a communications interface coupled to the processor, the communications interface coupled broadcast data to one or more client systems, the communications interface further coupled to receive data from the one or more client systems;

a storage device coupled to the processor, having sequences of instructions stored therein, which when executed by the processor cause the processor to

broadcast meta-data to the one or more client systems, the meta-data including descriptions of a plurality of data files;

receive ratings of each one of the plurality of data files from the one or more client systems; and

broadcast a portion of the plurality of data files to the one or more client systems in response to the ratings received from the one or more client systems.

12. The apparatus of claim 11 wherein the processor is further caused to select the portion of the plurality of data files, which have having higher ratings based on the received ratings.

13. The apparatus of claim 11 wherein the processor is further caused to broadcast a broadcast schedule of the portion of the plurality of data files prior to broadcasting the portion of the plurality of data files.

14. The apparatus of claim 11 wherein the processor is further caused to broadcast a broadcast schedule of the meta-data prior to broadcasting the meta-data to the one or more client systems.

15. An apparatus, comprising:

a processor having circuitry to execute instructions;

a communications interface coupled to the processor, the communications interface coupled receive data broadcast from a server system, the communications interface further coupled to transmit data to the server system;

a storage device coupled to the processor, having sequences of instructions stored therein, which when executed by the processor cause the processor to receive meta-data broadcast by a server system, the meta-data including descriptions of a first plurality of data files;

rate in response to a content rating table at least one of the first plurality of data files described by the meta-data, the content rating table generated responsive to data files previously accessed;

transmit the ratings of the at least one of the first plurality of data files to the server system;

receive a second plurality of data files broadcast by the server system; and

store based on the content rating table one or more of the second plurality of data files broadcast by the server system.

16. The apparatus of claim 18 wherein the processor is further caused to receive a meta-data broadcast schedule broadcast by the server system, the client system activated in response to the meta-data broadcast schedule.

17. An apparatus comprising:

a processor having circuitry to execute instructions;

a communications interface coupled to the processor, the communications interface coupled receive data broadcast from a server system, the communications interface further coupled to transmit data to the server system;

a storage device coupled to the processor, having sequences of instructions stored therein, which when executed by the processor cause the processor to receive meta-data broadcast by a server system, the meta-data including descriptions of a first plurality of data files;

rate in response to a content rating table at least one of the first plurality of data files described by the meta-data, the content rating table generated responsive to data files previously accessed;

transmit the ratings of the at least one of the first plurality of data files to the server system;

receive a broadcast schedule of a second plurality of data files broadcast by the server system;

selectively receive based on the content rating table a portion of the second plurality of data files broadcast by the server system; and

store the portion of the second plurality of data files broadcast by the server system.

18. The apparatus of claim 17 wherein the processor is further caused to receive a meta-data broadcast schedule broadcast by the server system, the client system activated in response to the meta-data broadcast schedule.

19. The apparatus of claim 17 wherein the processor is further caused to receive a broadcast schedule of the second plurality of data files prior to selectively receiving the portion of the second plurality of data files.

20. A system, comprising:

a broadcast server; and

one or more client systems coupled to the broadcast server;

wherein the broadcast server is coupled to broadcast meta-data to the one or more client systems, the meta-data including descriptions of a plurality of data files;

wherein the one or more client systems are coupled to rate in response to a content rating table one or more of the plurality of data files described by the meta-data, the content rating table generated responsive to data files previously accessed;

wherein the one or more client systems are coupled to transmit to the broadcast server the ratings of the plurality of data files;

wherein the broadcast system is coupled to select a portion of the plurality of the data files in response to the ratings received from the one or more client systems; and

wherein the broadcast system is further coupled to broadcast the selected portion of the plurality of data files.

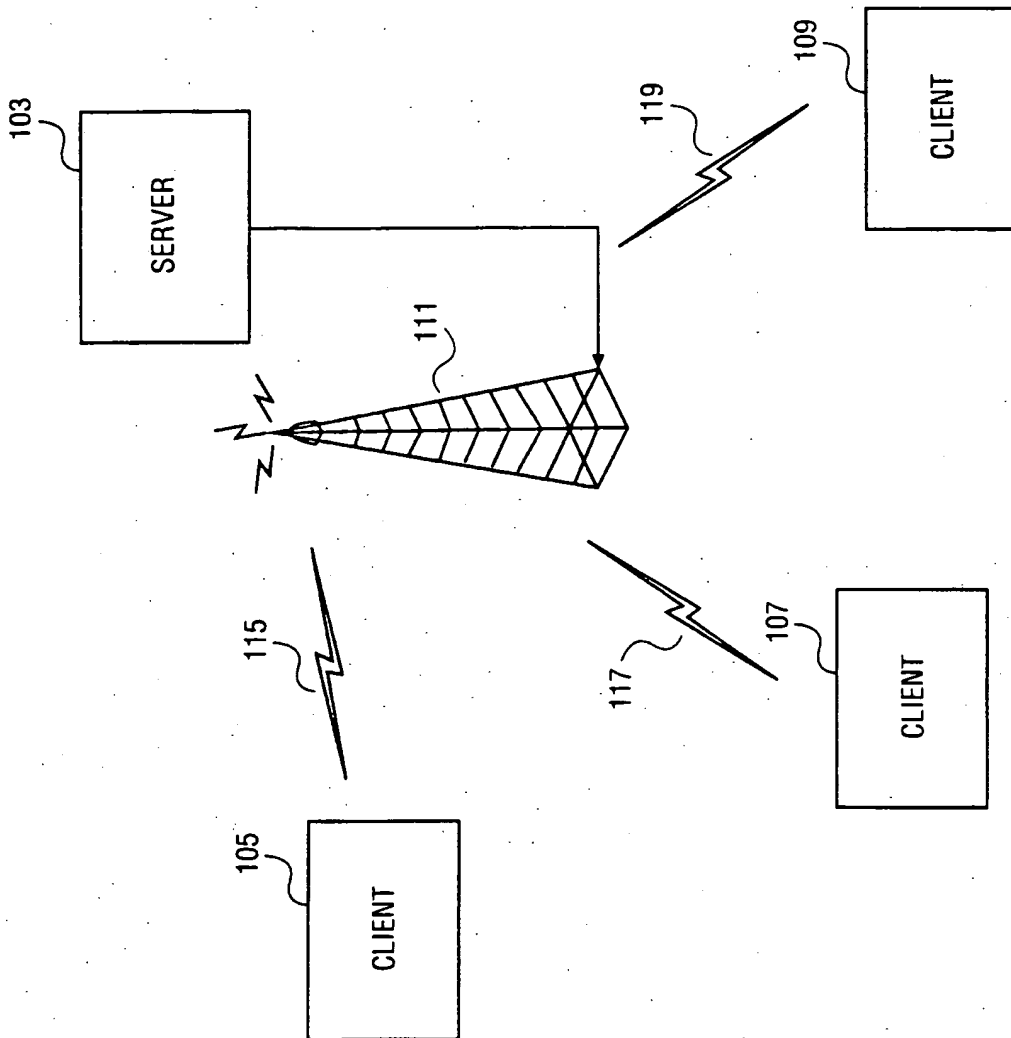


FIG. 1A

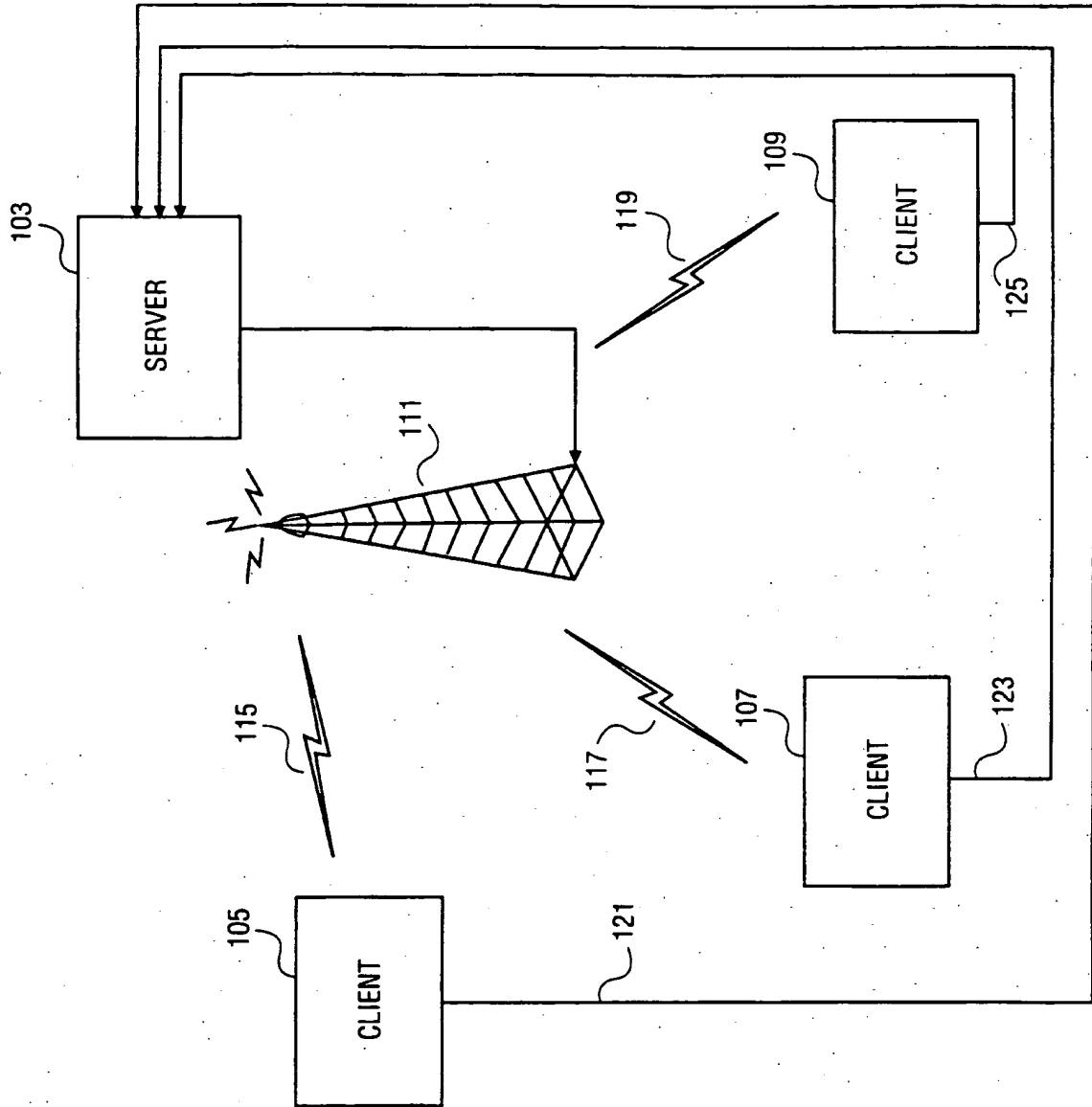


FIG. 1B

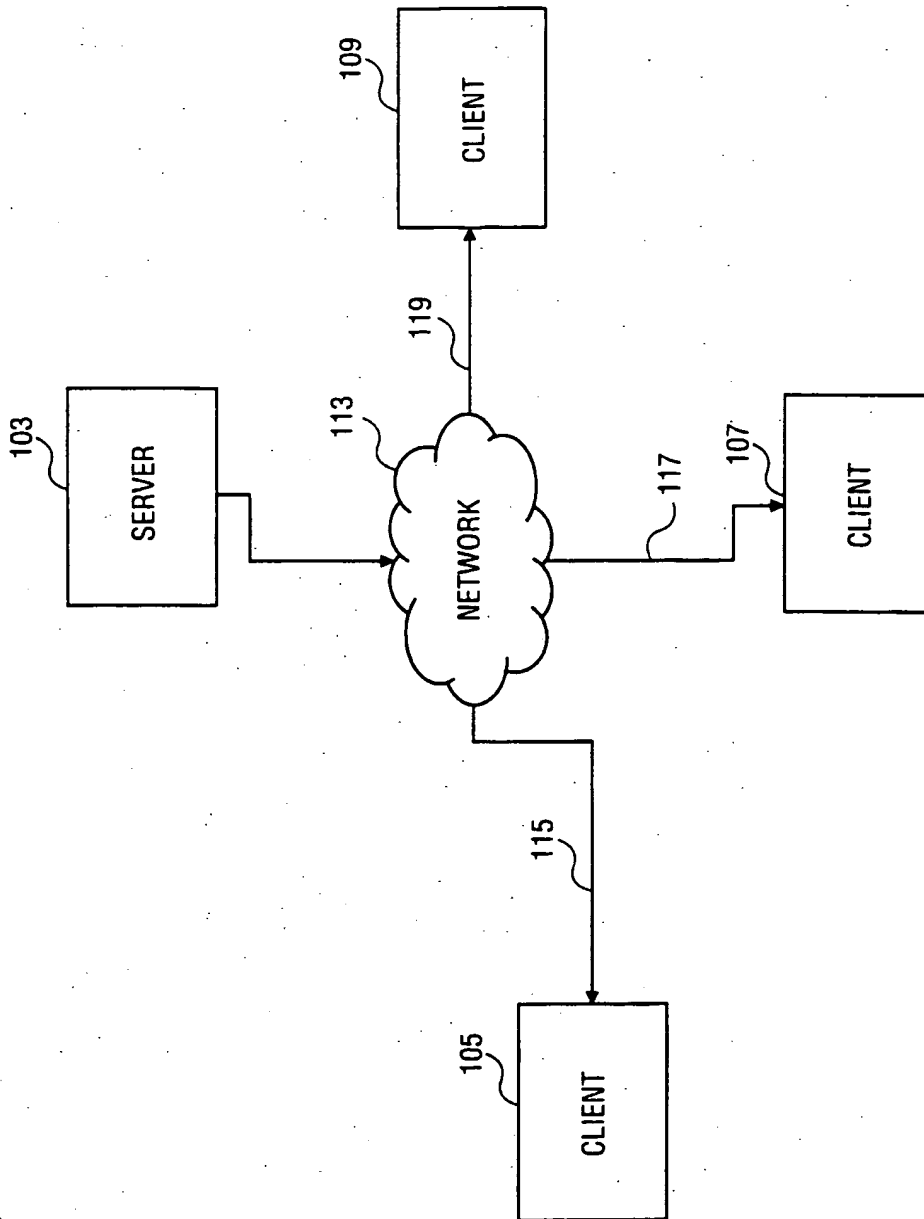


FIG. 1C

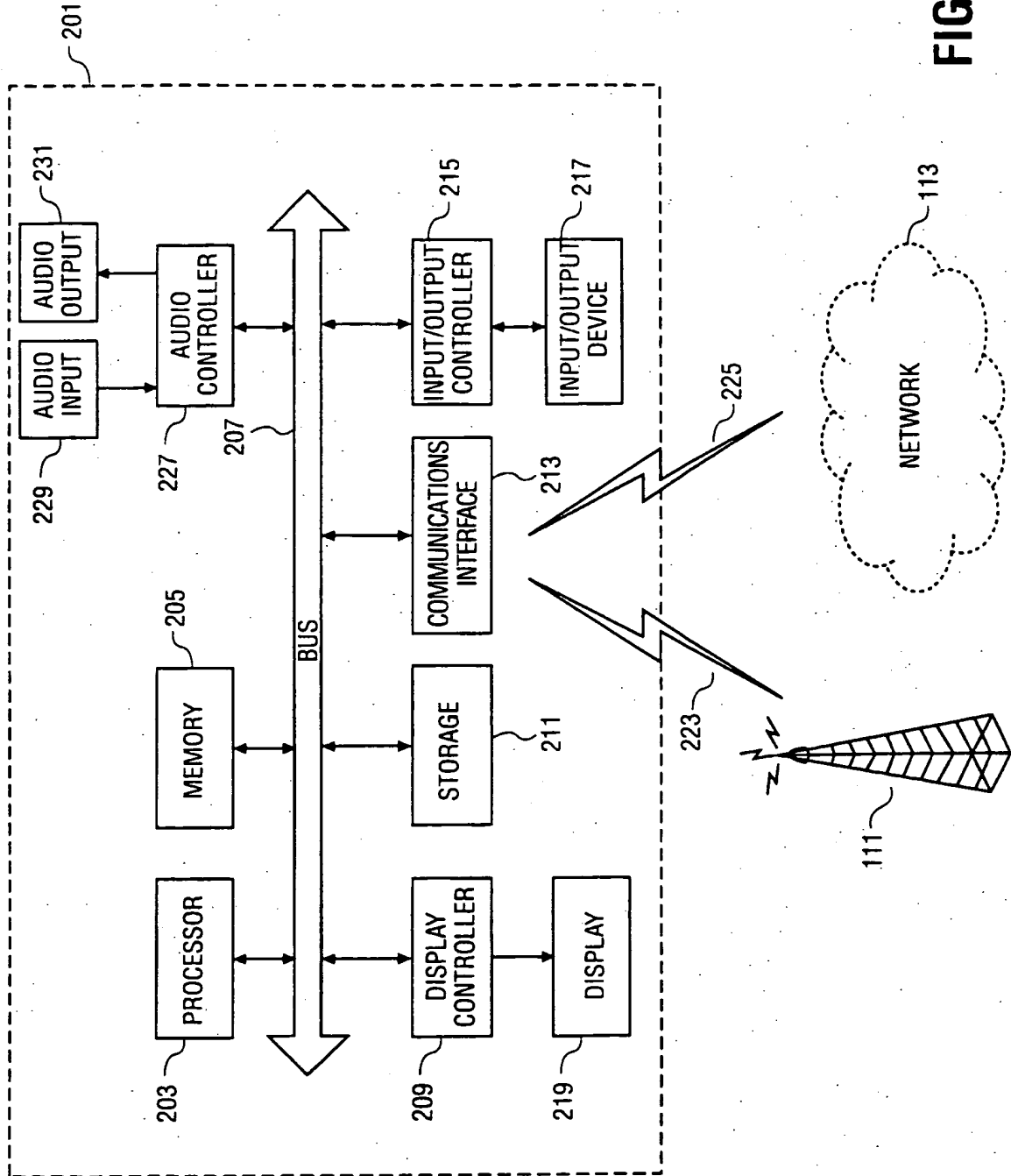


FIG. 2

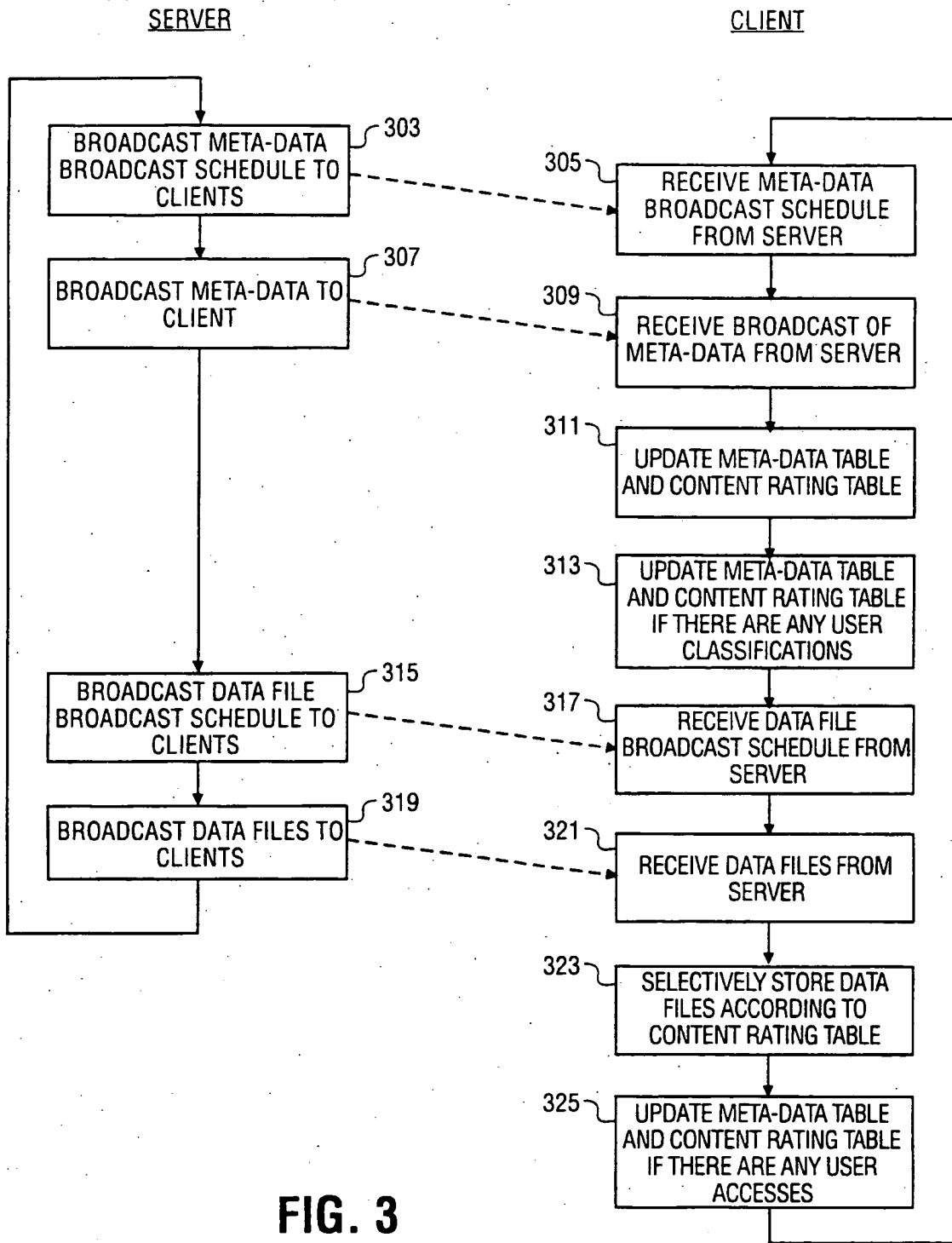


FIG. 3

6/9

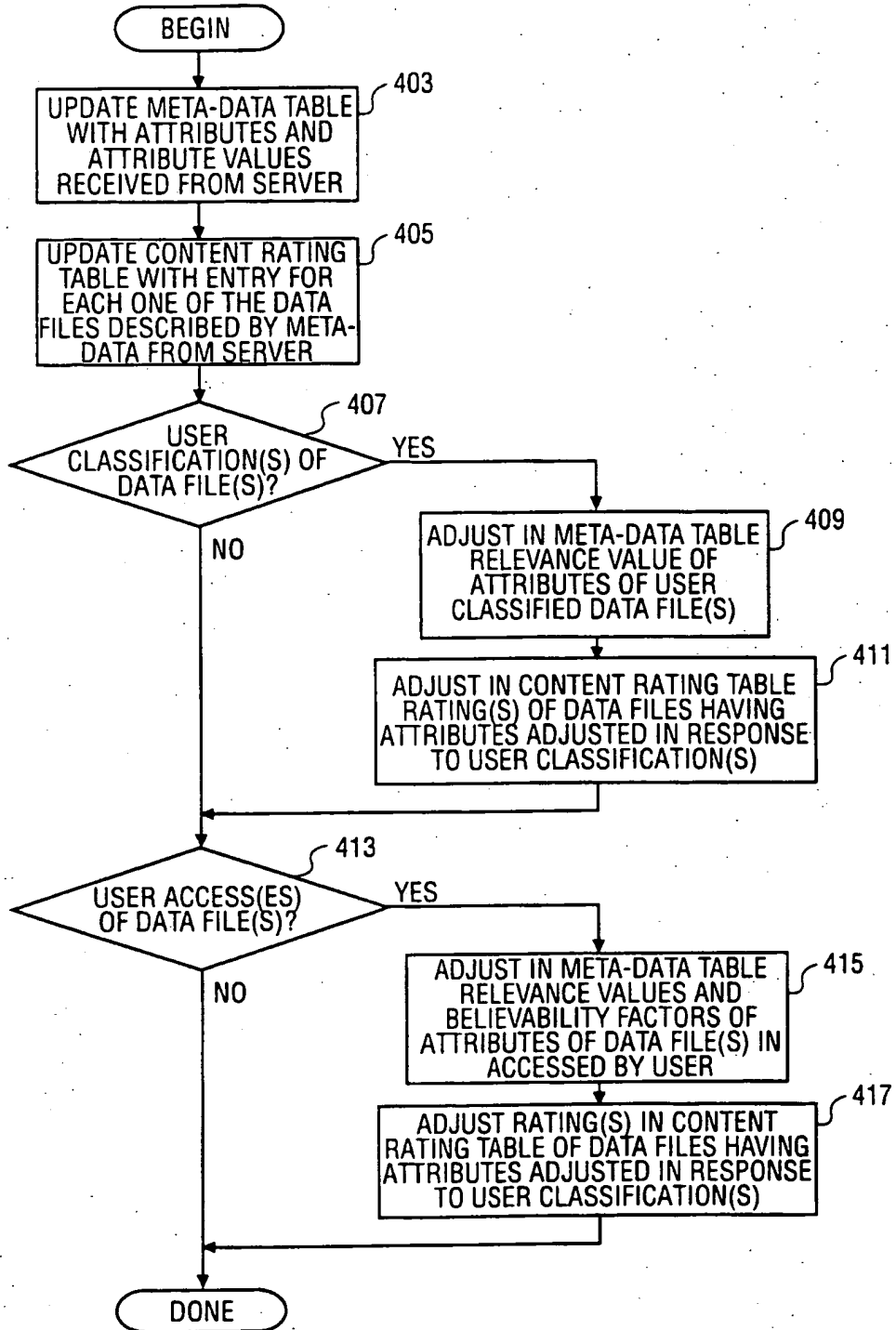


FIG. 4

NAME	ACTOR	GENRE
ACTION DUDE	JOE SMITH	ACTION
THE FUNNY SHOW	JANE DOE	COMEDY
BLAST 'EM	JANE DOE	ACTION
HARDY HAR HAR	JOE SMITH	COMEDY

FIG. 5

ATTRIBUTE	ATTRIBUTE VALUE	RELEVANCE	BELIEVABILITY
ACTOR	JOE SMITH	0	0
ACTOR	JANE DOE	0	0
GENRE	ACTION	0	0
GENRE	COMEDY	0	0

FIG. 6

NAME	RATING	RATING TYPE	IN CACHE	NEXT TREATMENT
ACTION DUDE	0	N/A	YES	N/A
THE FUNNY SHOW	0	N/A	YES	N/A
BLAST 'EM	0	N/A	YES	N/A
HARDY HAR HAR	0	N/A	NO	N/A

FIG. 7

NAME	CLASSIFICATION
ACTION DUDE	RECEIVE
THE FUNNY SHOW	REFUSE
BLAST 'EM	N/A
HARDY HAR HAR	N/A

FIG. 8

ATTRIBUTE	ATTRIBUTE VALUE	RELEVANCE	BELIEVABILITY
ACTOR	JOE SMITH	1	0
ACTOR	JANE DOE	-1	0
GENRE	ACTION	1	0
GENRE	COMEDY	-1	0

FIG. 9

ATTRIBUTE	ATTRIBUTE VALUE	RELEVANCE	BELIEVABILITY
ACTOR	JOE SMITH	1	1
ACTOR	JANE DOE	-1	0
GENRE	ACTION	1	1
GENRE	COMEDY	-1	0

FIG. 10

NAME	RATING	RATING TYPE	IN CACHE	NEXT TREATMENT
ACTION DUDE	1	EXPLICIT	YES	REPLACE
THE FUNNY SHOW	0	EXPLICIT	YES	REPLACE
BLAST 'EM	0.5	IMPLICIT	YES	KEEP
HARDY HAR HAR	0.5	IMPLICIT	NO	CAPTURE

FIG. 11

ATTRIBUTE	ATTRIBUTE VALUE	RELEVANCE	BELIEVABILITY
ACTOR	JOE SMITH	1	1
ACTOR	JANE DOE	-1	-1
GENRE	ACTION	2	2
GENRE	COMEDY	-1	0

FIG. 12

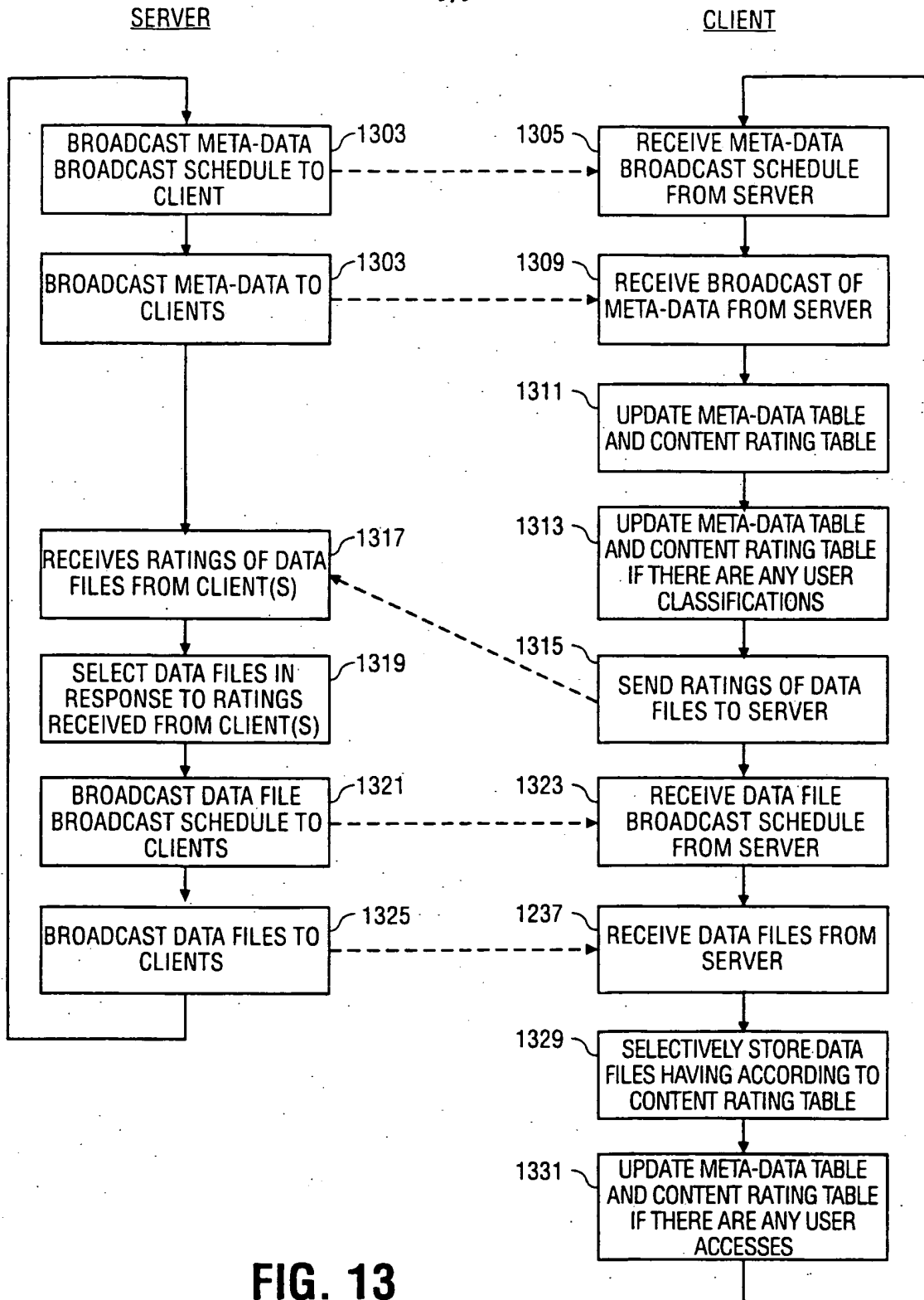


FIG. 13

INTERNATIONAL SEARCH REPORT

Internat Application No PCT/US 01/01576

A. CLASSIFICATION OF SUBJECT MATTER
IPC 7 H04N7/173 H04N7/16

According to International Patent Classification (IPC) or to both national classification and IPC

B. FIELDS SEARCHED

Minimum documentation searched (classification system followed by classification symbols)
IPC 7 H04N

Documentation searched other than minimum documentation to the extent that such documents are included in the fields searched

Electronic data base consulted during the international search (name of data base and, where practical, search terms used)
EPO-Internal, WPI Data, PAJ

C. DOCUMENTS CONSIDERED TO BE RELEVANT

Category *	Citation of document, with indication, where appropriate, of the relevant passages	Relevant to claim No.
X	<p>US 6 020 883 A (HERZ FREDERICK ET AL) 1 February 2000 (2000-02-01) column 6, line 38 - column 7, line 7 column 11, line 42 - line 55 column 22, line 53 - line 64 column 23, line 62 - column 24, line 10 column 34, line 15 - line 25 column 41, line 15 - line 37 column 45, line 52 - line 63</p> <p style="text-align: center;">--- -/--</p>	<p>1-4, 11-13,20</p>

Further documents are listed in the continuation of box C. Patent family members are listed in annex.

* Special categories of cited documents:

<p>*A* document defining the general state of the art which is not considered to be of particular relevance</p> <p>*E* earlier document but published on or after the international filing date</p> <p>*L* document which may throw doubts on priority claim(s) or which is cited to establish the publication date of another citation or other special reason (as specified)</p> <p>*O* document referring to an oral disclosure, use, exhibition or other means</p> <p>*P* document published prior to the international filing date but later than the priority date claimed</p>	<p>*T* later document published after the international filing date or priority date and not in conflict with the application but cited to understand the principle or theory underlying the invention</p> <p>*X* document of particular relevance: the claimed invention cannot be considered novel or cannot be considered to involve an inventive step when the document is taken alone</p> <p>*Y* document of particular relevance: the claimed invention cannot be considered to involve an inventive step when the document is combined with one or more other such documents, such combination being obvious to a person skilled in the art.</p> <p>*&* document member of the same patent family</p>
--	--

Date of the actual completion of the international search 14 August 2001	Date of mailing of the international search report 21/08/2001
--	---

Name and mailing address of the ISA European Patent Office, P.B. 5818 Patentlaan 2 NL - 2280 HV Rijswijk Tel. (+31-70) 340-2040. Tx. 31 651 epo nl. Fax: (+31-70) 340-3016	Authorized officer Sindic, G
--	--

INTERNATIONAL SEARCH REPORT

International Application No

PCT/US 01/01576

C.(Continuation) DOCUMENTS CONSIDERED TO BE RELEVANT

Category *	Citation of document, with indication, where appropriate, of the relevant passages	Relevant to claim No.
X	WO 00 01149 A (NDS LTD ;WACHTFOGEL REUVEN (IL); KIPNIS SHLOMO (IL); TSURIA YOSSEF) 6 January 2000 (2000-01-06) page 20, paragraph 4 -page 21, paragraph 1 page 22, paragraph 4 - paragraph 5 page 26, paragraph 2 page 28, paragraph 3 page 31, paragraph 5 - paragraph 6 page 34, paragraph 3 - paragraph 4 -----	6,8,10, 15,17,19
A	WO 99 65237 A (METABYTE INC) 16 December 1999 (1999-12-16) page 5, line 4 - line 29 page 7, line 17 -page 8, line 8 page 15, line 22 -page 16, line 22 page 20, line 20 - line 21 -----	2,4-10, 12,14-19

INTERNATIONAL SEARCH REPORT

Information on patent family members

Intern. Application No

PCT/US 01/01576

Patent document cited in search report	Publication date	Patent family member(s)	Publication date
US 6020883 A	01-02-2000	US 5758257 A	26-05-1998
		AU 703247 B	25-03-1999
		AU 4410396 A	19-06-1996
		CA 2207868 A	06-06-1996
		EP 0796538 A	24-09-1997
		WO 9617467 A	06-06-1996
		US 5734720 A	31-03-1998
		US 5754938 A	19-05-1998
		US 5754939 A	19-05-1998
		US 5835087 A	10-11-1998
		US 6088722 A	11-07-2000
US 6029195 A	22-02-2000		
WO 0001149 A	06-01-2000	AU 4388999 A	17-01-2000
		CN 1273741 T	15-11-2000
		EP 1013088 A	28-06-2000
		GB 2339503 A	26-01-2000
WO 9965237 A	16-12-1999	AU 4412299 A	30-12-1999
		EP 1084573 A	21-03-2001